



Palace View, London
Nine Elms SE1

GARTON JONES.COM



Palace View, London Nine Elms, SE1

GARTON JONES.COM

9 Albert
Embankment
London
SE1 7SP

Sales +44 (0) 20 7735 1888
nineelms@gartonjones.com
www.gartonjones.com

£895,000 Leasehold

A stunning and very spacious double bedroom apartment in the modern Palace View development. The property comprises a large open plan reception room with a smart integrated kitchen, floor to ceiling windows, a luxury bathroom suite and a balcony. Located on the banks of the River Thames close to Big Ben and Houses of Parliament, Palace View offers the highest standard of living combined with having London's vibrant Southbank with all its shops, restaurants, and attractions right on your doorstep. The residents' facilities at Palace View include a state-of-the-art gymnasium, cinema, bike storage, a large roof terrace (stunning views of Big Ben and Houses of Parliament) and 24 hour concierge service.

999 Years Remaining
Service Charge: £4,524 Pa
Ground Rent: £500 Pa

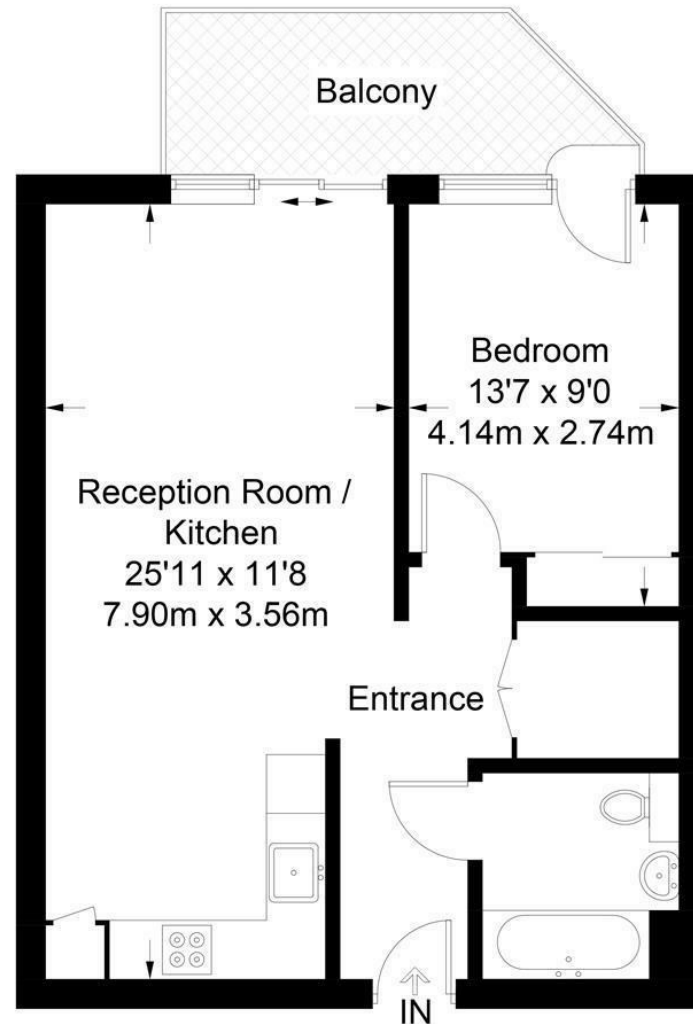
- 1st Floor of 8 Floors
- 553 sq.ft (51.4 sq.m)
- 1 Double Bedroom
- Luxury Bathroom Suite
- Open Plan Reception Room with a Smart Integrated Kitchen
- Balcony
- Residents Gymnasium
- Cinema & Roof Terrace
- Close to Local Transport links of Westminster, Waterloo and Vauxhall
- 24 Hour Concierge



EPC certificate available on request.

Palace View

Approximate Gross Internal Area = 553 sq ft / 51.4 sq m



Not to scale, for guidance only and must not be relied upon as a statement of fact.
All measurements and areas are approximate only and have been prepared in
accordance with the current edition of the RICS Code of Measuring Practice.

